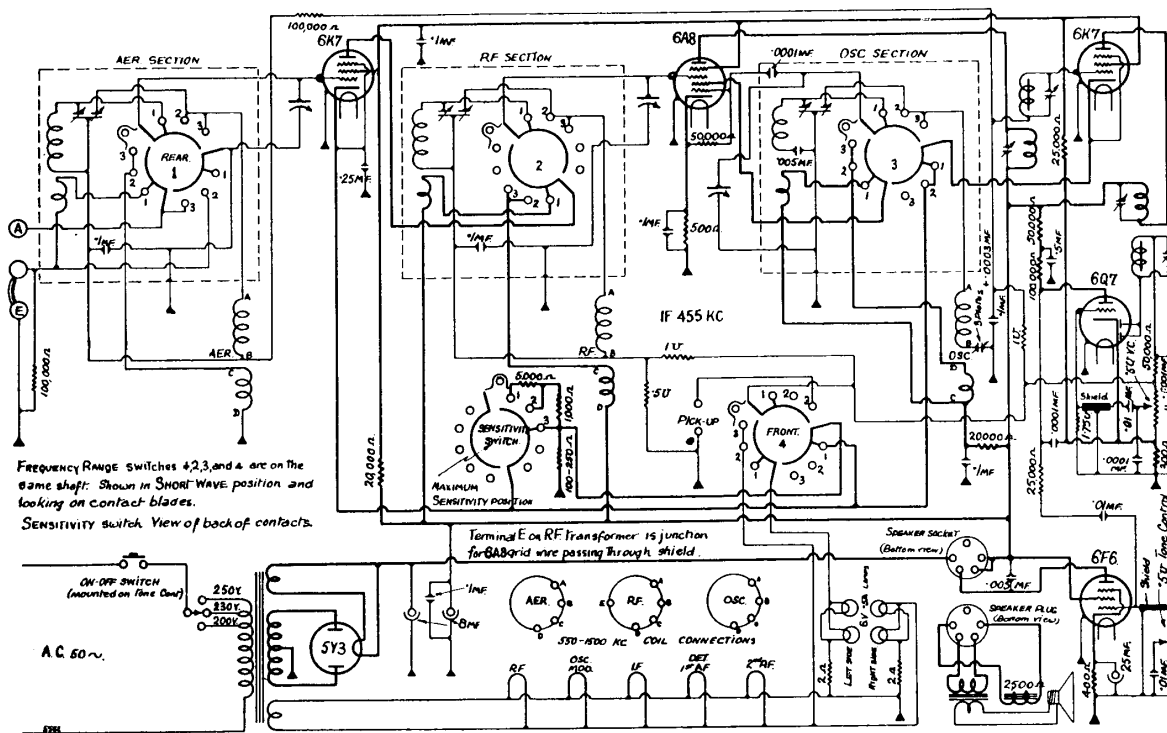


# "Healing" A.C. Operated Dual-wave Model 556E



**H**EALING Model "556E" is a six-valve receiver designed for dual-wave coverage and A.C. operation. It is housed in a console type cabinet and uses a 10in. loudspeaker with a field coil resistance of 2,500 ohms.

Five controls are fitted to this receiver, these being for volume; wave-change (with extra position for gramo. operation); tuning; sensitivity (three positions); and tone control (continuous, with A.C. power switch at anti-clockwise end). The wave-change switch, in addition to its gramo. switching function, also controls the dial scale illumination, thus providing wave-band indication. Four 6v. 0.5A. dial lamps are required; two for each scale.

The circuit arrangement is quite straightforward and presents no particular servicing difficulties. It should be noted that the 300 ohms bias resistor for the 6Q7 forms part of the voltage divider system, and it is suggested that an improvement in results may be effected by shunting this resistor with a low-voltage, high-capacity electrolytic condenser, as it is not bypassed at present.

The I.F. used in this receiver is exactly 455 KC., and the trimmers for this are accessible from the top of the I.F.T. cans. The aerial, R.F. and oscillator trimmers are all located underneath the chassis, and those nearest the chassis (at the bottom when looking at an upturned chassis) are for adjustment of the broadcast circuits. At this point, attention must be drawn to an apparent error in the top-chassis layout depicted herewith. (Unfortunately, no receiver is available to make a check on.) From this it appears as though the grid lead for the 6A8 converter is taken from the oscillator coil. It would seem as though the can marked "OSC. TRAN." should really be "R.F. TRAN.", and this point should be borne in mind when servicing one of these receivers.

### OPERATING VOLTAGES.

The following measurements were taken with a 1,000 ohms per volt meter

between chassis and the socket contact indicated. The sensitivity switch was at its maximum setting and the receiver was detuned from any signal.

6K7, R.F. Amplifier. Plate, 230v.; screen, 85v.; cathode, 4.5v.

6A8, Frequency Converter. Plate, 230v.; osc. plate, 165v.; screen, 85v.;

cathode, 3v.

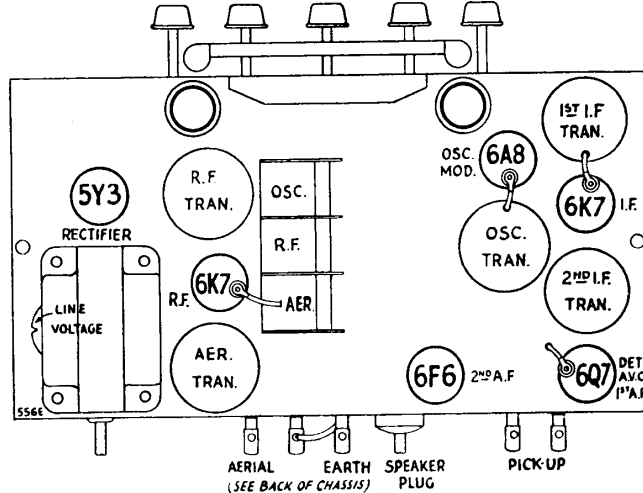
6K7, 455 KC. I.F. Amplifier. Plate, 230v.; screen, 85v.; cathode, 4.5v.

6Q7, Detector, A.V.C. Rectifier and A.F. Amplifier. Plate, 85v.; cathode, 1.5v.

6F6, Output Pentode. Plate, 210v.; screen, 20v.; cathode, 12.5v.

5Y3, Rectifier. Filament to chassis, 380v.

ON-OFF SWITCH & TONE CONTROL    SENSITIVITY SWITCH    STATION SELECTOR    PICK-UP & FREQ. RANGESWITCH    VOLUME CONTROL



AERIAL (SEE BACK OF CHASSIS)    EARTH    SPEAKER PLUG    PICK-UP