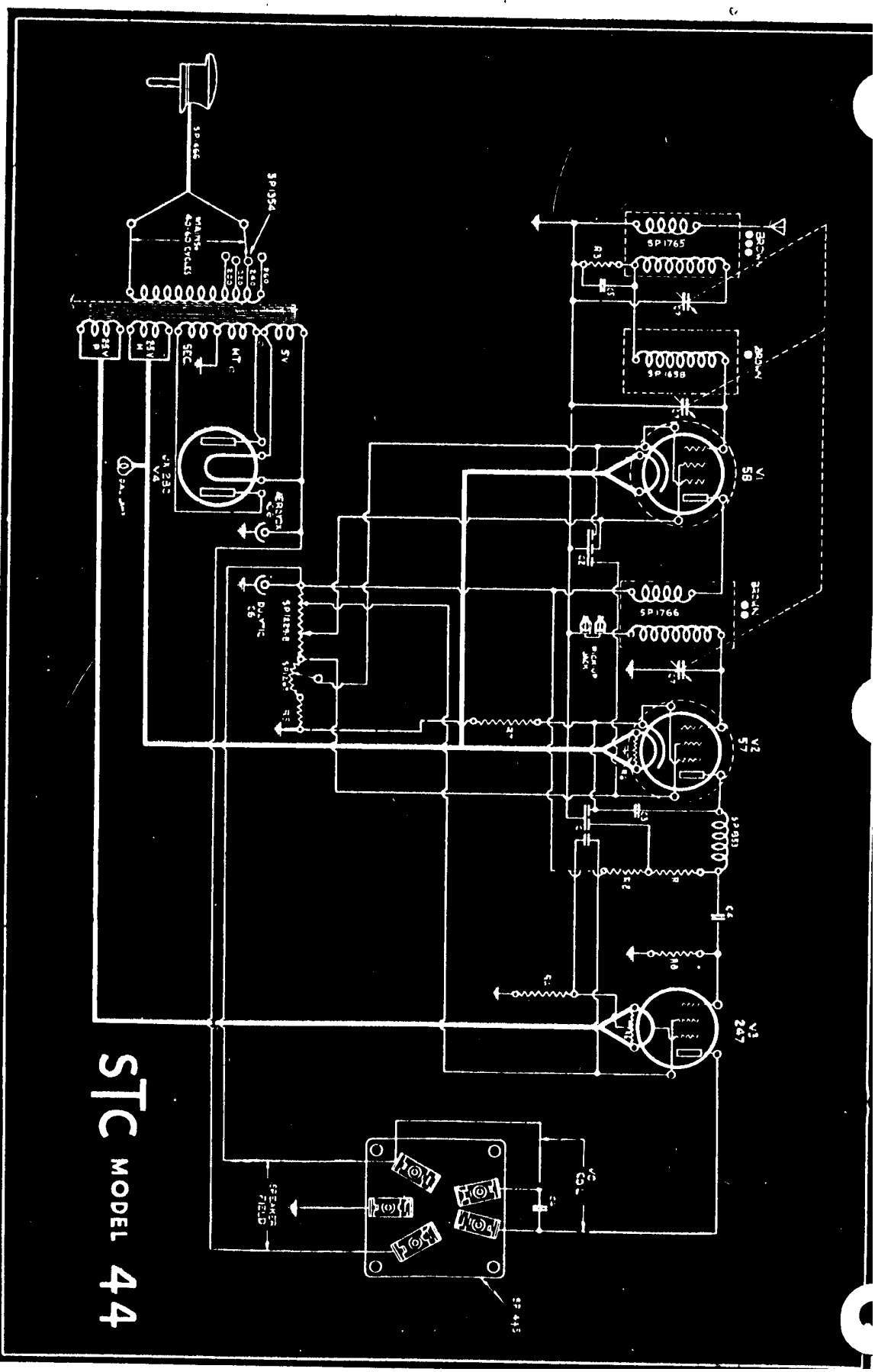


- C1 = 3M1 Mfd. Condensors
- C2 = 3X.25 " "
- C3 = 0001 " "
- C4 = 01 " "

- C5 = .02 Mfd.
- C6 = 8 " "
- C7 = 3 Rang. Variable
- C8 = 10 Mfd. 25V Working

- R1 = .25WA ——— 1 Watt
- R2 = 50,000W ——— " "
- R3 = 100,000W ——— " "
- R4 = 400W. ——— " "

- R5 = 110W
- R6 = 20 w C.T.
- R7 = 6.200W.
- R8 = .5 Meg — 1 watt.



STC MODEL 44